

Words from our President

Hello, February! We have many exciting events coming up for our Chapter, which should make for a fun-filled spring.

Don't miss a fun night of shopping for a good cause! Join us at **Kendra Scott in Preston Center on Tuesday, February 9 between 5-8 p.m.** as 20 percent of the evening's proceeds benefit EWI® of Dallas Scholarship Programs. Bring your friends, family, neighbors, co-workers and any random people you meet on the way!



Please bring sports bras and camis to our **February 19** meeting for our philanthropic project with Genesis Women's Shelter. Sponsorship and Silent Auction materials have been sent for our **Casino Royale Executive Appreciation and Scholarship Fundraiser on Thursday, April 14.** Please share with your executives and make plans to join us for a fun and impactful evening!

Our Scholarship Programs are well underway, with many upcoming deadlines and dates to mention. The **EWISP orientation night will be held on February 17** at Sewell Automotive Companies. The deadline for **EWISP applications is March 4 and March 31** for our **ASIST Scholarship.**

"In life, there are some people that make you laugh a little louder, smile a little brighter and life a little brighter." Thank you for being those people!

Lots of love,
Mackenzie

Mackenzie C. Ramey
EWI of Dallas President 2015-2016

2015-2016 OFFICERS & DIRECTORS

PRESIDENT

Mackenzie Ramey
LH Holdings, Inc./Lyda Hill Foundation

VICE PRESIDENT/PRESIDENT- ELECT

Lisa Vogel
Sewell Automotive Companies

SECRETARY

Jeannette Davis
JLL

TREASURER

Jennifer Clark
Dallas Hearing Foundation

SERGEANT-AT-ARMS

Nichole Robb
Dallas Convention & Visitors Bureau

B/C/DP Director

Shelley Geddie
Sewell Automotive Companies

Retention and Recruitment Director

Lexi Waymn
Oakwood Worldwide

Program Director

Danielle Forney
Trinity Industries Inc.

Communications Director

Denise Labrado
Dallas Regional Chamber

Fundraising Director

Melanie Linnear
State Fair of Texas

Advisor


Lindsay Jones
Ameriprise Financial

Advisor

Kathy Shannon Stone
Hobiltzelle Foundation

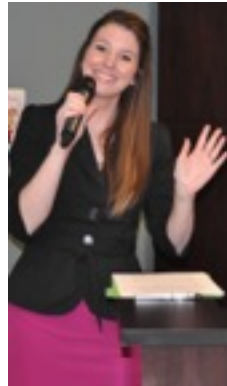
This Month's Meeting Information

EWI® of Dallas

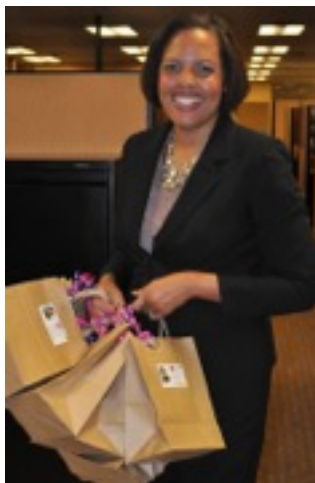
MONTHLY MEETING	BOARD MEETING
<p>Date: February 16, 2015</p> <p>Location: Southwest Allergy & Asthma Center 6100 Windcom Ct, Ste. 101 Plano, TX 75093</p> <p>Phone: 972-398-3500</p> <p>Reception: 6:00 p.m.</p> <p>Dinner: 6:30 p.m.</p> <p>Price: \$50.00</p> <p>Parking: Self-Parking</p>	<p>Date: February 24, 2015</p> <p>Location: February 24, 2015 Oakwood Worldwide 2033 Chenault Drive, Suite 136, Carrollton, TX 75006</p> <p>Host: Lexi Wayman Oakwood Worldwide</p> <p>Meeting: 5:00 pm Dinner: 5:45 pm</p> <p>RSVP: If you are interested in attending the Board Meeting, please contact: Jeannette Davis JLL 2015-2016 Secretary by noon on Monday, February 19th Office: 214-438-6122 Email: Jeannette.davis@am.jll.com</p>
<p>February Monthly Meeting</p> 	
<p>Checks should be made payable to: Executive Women International® or via PayPal® on www.ewidallas.com under <i>upcoming events</i></p> <p>Send reservations and remittance to: Nichole Robb c/o Dallas Convention & Visitors Bureau 325 N. St. Paul St., Suite 700 Dallas, TX 75201</p> <p><input type="checkbox"/> I will attend</p> <p><input type="checkbox"/> I will not attend</p> <p><input type="checkbox"/> I will have guest(s)</p> <p>GUEST(s): _____ _____</p>	<p>RSVP to Reservation Hotline: S/ Nichole Robb Dallas Convention & Visitors Bureau 325 N. St. Paul St., Suite 700 Dallas, TX 75201 office: 214-571-1014 fax: 214-665--2914 email: nrobb@dallascvb.com</p> <p>Total Number of Reservations @ \$50/pp _____</p> <p>Amount Remitted: _____</p> <p>Would you like a receipt mailed to you? _____</p> <p>NAME: _____</p> <p>FIRM: _____</p>
<p>For special dietary request, please contact Danielle Forney, Program Director, 972-589-8497 at least three days prior to the meeting.</p>	

NOTE: All Representatives have automatic standing reservations. Representatives **DO NOT** need to return this form unless canceling or responding with guest(s). **Cancellations must be received by the deadline or your firm will be billed.** It is helpful to receive payment prior to the meeting. If you require a receipt for your payment, you may check the appropriate space on this form and your receipt will be mailed to you upon receipt of your check. Checks are not processed until after the meeting date; therefore, if you mail your check ahead and a change of plans requires you to cancel your reservation, as long as you cancel prior to the deadline, your original check will be returned to you.

January Meeting 2016







February/March/April Birthdays

February	2	Melanie Linnear	State Fair of Texas
February	16	Lexi Wayman	Oakwood Worldwide
February	20	Kathy Dodson	Ernst & Young
February	25	Nichole Robb	Dallas Convention & Visitors Bureau
March	1	Lindsay Jones	Ameriprise Financial
March	3	Sheryl Pickle	Four Seasons Resort and Club
March	26	Kathy Broll	Stream Realty Partners, LP
March	30	Janie Sandoval	The Dallas Breakfast Group
April	3	Jane Adams	Special Delivery Service, Inc.
April	7	Meredith Ford O'Neil	American Heart Association
April	11	Kimberly Epperson	Deloitte Services LLP
April	21	Tanya Damon	Ticketmaster
April	28	Victoria Dinielli	Spencer Stuart

Firm Anniversaries

March	Stream Realty Partners, LP, 10 Years
April	Bank of America Merrill Lynch, 10 Years

Save the Date

Monthly Meetings

February 16, 2016
 March 15, 2016
 April 14, 2016
 May 17, 2016
 June 21, 2016
 July 19, 2016
 August 16, 2016
 September 13, 2016

Board Meetings

February 24, 2016
 March 23, 2016
 April 27, 2016
 May 25, 2016
 June 29, 2016
 July 27, 2016
 August 24, 2016
 September 28, 2016

Mark Your Calendar for the 2016 Leadership Conference and Annual Meeting in Spokane, WA **September 20-25, 2016** – See you there!!!!



Professional Development

Please join us every month for the free educational program. They are held on the 1st Tuesday of each month. Check the calendar and EWI Website for details and updates.

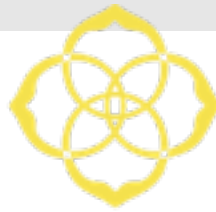
**Join us in March
Tuesday, March 1, 2016
More Details to Follow**

2 p.m. CST

Upcoming Free Webinars

Every month free webinars are provided to members and their member firms.

Be sure to visit <http://ewiconnect.com/> to sign-up



KENDRA SCOTT

Save The Date!

Just in time for **Valentine's Day!**
Find the perfect jewelry to compliment
your Date Night Outfit at the

Kendra Gives Back Event!

TUESDAY, FEBRUARY 9, 2016
5:00 – 8:00 pm

Kendra Scott Jewelry
The Plaza at Preston Center
8383 Preston Center Plaza Drive, Suite 160
Dallas, TX 75225

Invite your friends, family, and co-workers!
Shop for a good cause!

20% of the Sales will benefit EWI of Dallas.



EWI

/Salt Lake City, U
Web: ewico



801.355.2800/M
com



01.355.2852/
e

We'll Miss You!!



After almost 32 years in Dallas, I've decided it's time to retire and go home to Arkansas. It has been a sincere pleasure working with each of you through EWI and various other connections made within the Dallas Community. It was also my great pleasure to serve EWI in various capacities. I will be forever grateful for the opportunity EWI provided me, to thrive both personally and professionally. The relationships built during this time are some of the best of my career and lifetime!

I wish each of you great success and happiness, and I hope that EWI will be as fulfilling to you as it was to me.

Your friend,
Kathy

Contact Information:

2610 Crestview Dr.

Magnolia, AR 71753

Cell = 214-392-1977

kathyadodson@yahoo.com

Kathy A. Dodson | Senior Executive Assistant | ESS
Supporting Luciene Schafer, Ted Farbisz, Alex DeVage & Rich Barr

Ernst & Young LLP

EWISP Scholarship Success Story

Ellisa Brown
Johns Hopkins University Student
4000 Parkside Center Blvd Apt. 903
Dallas, TX 75244
December 23, 2015

Dear Executive Women International Scholarship Program:

In the month before I left for college, I completed a community service within my Dallas community and very close to my heart. I worked with A-WOW International Girls Leadership Initiative to plan and operate their World Summit as I have every year since my sophomore year in high school. This year's World Summit included girls from India and the Dallas area and was hosted on the Sothern Methodist University campus. I was happy to finish my summer with this particular community service activity because it was this organization that fostered the skills within me that enabled me to get into my college of choice, Johns Hopkins University.

My first semester at Johns Hopkins has given me the chance to explore the great city of Baltimore, expand my scholarly knowledge, and learn to take on the responsibilities of everyday life. My classes have been intellectually stimulating and have reinforced my choice in major, Political Science.

In addition, this semester I have been able to secure a position on the Johns Hopkins University *News-Letter* as the Layout Editor. In my position, I upload the newspaper stories onto the newspaper website and I layout the first page of each section. By working with the newsletter, I have been able to further my passion for journalism, while donating my gifts to improving my Hopkins community.

Also, I have taken a job as a Student Monitor with the Office of Student Activities. Through this position I have been offered the chance to start a campaign consultation service working with approximately three hundred student groups. This will serve as experience for my future career in public relations and campaign management. I will be laying the foundation and starting this program in the upcoming semester.

Thank you again, and I look forward to your continued support.

Sincerely,
Ellisa Brown

12/26/2015 5:54:13 PM

Student Enrollments

Brown, Ellisa A

Pre-Major

46F10B

<u>Term</u>	<u>Area</u>	<u>Dept</u>	<u>Course</u>	<u>Title</u>	<u>Grade</u>	<u>Attempt Credits</u>	<u>Earned Credits</u>	<u>GPA</u>
Fall 2015								
	H	CLAS	AS.040.121	Ancient Greek Mythology	A-	3.00	3.00	
	S	ECON	AS.180.101	Elements of Macroeconomics	B+	3.00	3.00	
	S	POLI	AS.190.101	Intro American Politics	A	3.00	3.00	
	S	POLI	AS.190.209	Contemp Int'l Politics	B+	3.00	3.00	
	H	HUMC	AS.300.290	Fresh Sem:Shakespeare/his "Goddess"	A	3.00	3.00	
						15.00	15.00	3.66



ATTENTION DALLAS CHAPTER REPRESENTATIVES AND SUSTAINING MEMBERS



Do you have a relative who would be eligible for the Dallas Chapter Relative's Scholarship? Candidates must be a relative of a Dallas Chapter representative, sustaining member, or their spouse (this includes nieces, nephews, cousins and grandchildren) and graduating from a high school in Collin, Dallas, or Tarrant counties.

Relatives of member firm Executives are not eligible.

Recipients are judged on the basis of leadership, scholastic ability, community service, financial need and plans/goals for the future. Representatives of the B/C/DP Committee along will act as independent judges, treating each application confidentially.

Please contact your candidate today and have them complete an application. The winner will be selected in April and the award will be presented at the May Chapter Scholarship Awards Night.

Please submit completed applications to:

Amy Scott

Cotton Bowl Athletic Association

One Legends Way

Arlington, TX 76011

817-892-4806

amy@attcottonbowl.com

All applications are due by March 31, 2016.

**The application is also available on our
website: www.ewidallas.com**

Let's Raise the Bar to Raise the Bras!

**Please bring new bras, sports bras, tank tops and
camisoles**

(any color, any size, any style)

to the February EWI Meeting.

Donations will be given to
the **Genesis Women's Shelter**.
They are in great need of bras!

These women are working hard
to have a fresh start and we want to help.
If you cannot attend the February meeting,
email Shelley Geddie at sgeddie@sewell.com and she
will make arrangements to pick up your donation.



Dallas Great Museums

One thing Dallas does not lack is entertainment. We have a wonderful abundance of museums ranging from family entertainment to something the pure art lover would enjoy. You could spend several hours, have a picnic on their lawn or enjoy an entire day. Some are now free and others have a minimal fee to enter their doors. But I must say, they are all worth your time to visit.

The Dallas Museum of Art features many permanent collections as well as international exhibits. They have hundreds of programs each year including Late Night which is held the third Friday every month when the Museum is open until Midnight.



In that same area, which I call the Triangle of Museums is the Nasher Sculpture Center and the Crow Collection of Asian Art. The Nasher Sculpture Center is a wonderful way to enjoy art both indoors and outdoors with such artists as Picasso, Rodin and Max Ernst just to name a few. In the Crow Collection there are more than 500 artworks dating from 3500 BC to the early 20th century which allows you to travel around the world. I have attended various programs there from a tea service to sleep sessions. You can even take an art class (didn't do that one).



A short walk away is the exciting Perot Museum of Nature and Science which features fascinating exhibits on each floor. Keep going and you can take a tour of the Sixth Floor Museum which is a wonderful documentation of the Kennedy assassination. Then just around the corner is the Old Red Museum, in which we were privileged to have one of our EWI meetings. Both the Sixth Floor and Old Red are beautiful and well preserved buildings.

In case you are wondering about the location of the trains that were always in Fair Park, they are now 30 miles north in Frisco at the Museum of American Railroad. It is an ambitious project with houses exhibits and provides year-round educational programs. The actual site is currently under construction but you can have access to the locomotive and rolling stock collection by limited scheduled tours. Their interim offices, exhibits, and retail are presently at the Frisco Heritage Museum.

Below are the museums of the month that possibly you have not visited:

Dallas Firefighters Museum



Actually, I had never visited this museum so I thought I better get there before I reported it to you. This past weekend I took my six-year-old granddaughter and we made a visit. It was well worth our time. We were met by Terry May a retired Dallas firefighter for 36 years. He was a wealth of information and ready to visit with us for as long as we wanted. The museum was a plethora of information and memorabilia of days gone by. We were on a tour with another young couple from west Texas, the husband was also a fire fighter and his wife was an EMT. So between the three of them it was very interesting. As we were leaving a group of people were coming in with younger children. Their grandfather was also a retired fireman from Fire Station #39 and #19, also for 36 years. It was a great day and my granddaughter is still talking about it. There is a minimal fee but a fun 30-45 minutes. It is located directly across from Fair Park at 3801 Parry

Avenue.

Dallas Holocaust Museum/Center for Education and Tolerance



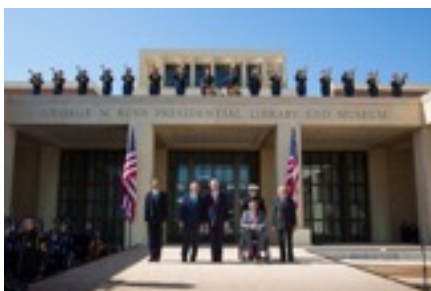
A downtown museum focusing on preserving the memory of the Holocaust. It houses memorabilia from the Holocaust, such as artwork depicting life in concentration camps and much more including a museum and library. Founded by a group of local Holocaust survivors who at times are available to answer questions and sit and visit with you. It is a great historical museum for older kids and teenagers about learning the importance of the Holocaust. There is also a fee and located at 211 N. Record Street.

Heard Natural Science Museum & Wildlife Sanctuary



Located in McKinney, this museum allows you to escape downtown Dallas to enjoy the trails, gardens and wildlife not found in the city. Parents and families can rent out different areas of the park for private parties and events. There is a rope course that would be perfect for group activities. There is an onsite gift store for those unique gifts or souvenirs. Contact them at 972.562.5566.

George W. Bush Presidential Center



Not so unusual but a little newer to our city. The George W. Bush Presidential Center is the home of the Bush Presidential Library and Museum, and the Bush Institute. This museum offers a wide variety of official records and artifacts from the Bush presidential term, including more than 70 million pages of paper records, four million digital photos and 200 million emails. The museum also features a full-scale replica of Bush's Oval Office where you can sit and take your picture and pretend you are the President for the day. The location is on 15-acre park on the campus of Southern Methodist University in

the University Park neighborhood. Plan your events there by calling 214.200.4300, but allow plenty of advance notice.

EXECUTIVE WOMEN INTERNATIONAL

Mission

Executive Women International (EWI) brings together key individuals from diverse businesses for the purpose of promoting member firms, enhancing personal and professional development, and encouraging community involvement.

Vision

To be a global women's organization of 5,000 engaged members empowering others for positive change.

Values

Integrity | Excellence | Respect | Collaboration

Did you know you can find valuable information for members, board members, corporate documents and interact with EWI members from across the country online at <http://ewiconnect.com/>?

If you need help with this, please contact Denise Labrado, EWI of Dallas Communications Chair, at dlabrado@dallaschamber.org

Access valuable Chapter information at <http://www.ewidallas.com>

JANUARY 2016 Reports & Board of Directors Recap

Chapter Membership:	
Total Member Firms	51
Total Representatives	54
Total Executives	57
Total Sustaining	29
Total Transitional	1
Total Chapter or Corporate Life	4
Meeting Attendance:	
Firms Represented by Reps	39
Guests Present	6
Percentage of Firms Present	76%
Representatives Present	45
Executives Present	0
Sustaining Members Present	0
Total Attendance:	51

January 27, 2016 Reports & Board of Directors Recap

Location: Dallas Regional Chamber

Chapter Membership:	
Member Firms	62
Total Representatives	67
Total Executives	71

Sustaining Members	31
Corporate Life	5
Meeting Attendance:	
Firms Represented by Reps	43
Guests Present	2
Percentage of Firms Present	62%
Representatives Present	40
Executives Present	0
Sustaining Members Present	0
Total Attendance:	51

Secretary's Report: Minutes of the December 17, 2016 Board Meeting were approved. Secretary Jeannette Davis, JLL, reported five Courtesy Notices had been sent since the last board meeting.

Treasurer's Report: The Treasurer's Report is available under the Membership information section of the website.

Sergeant-At-Arms: Officer Nichole Robb, Dallas Convention & Visitors Bureau, reported 51 attended the January 19, 2016 Chapter Meeting; 76 percent of firms were represented.

B/C/DP: Director Shelley Geddie, reported for the B/C/DP Committee: **(EWISP)** Scholarship notices have been distributed to high school counselors for nominations. We have received 26 nominations to date. EWISP orientation is scheduled to be held on February 17, 2016 from 6:30 pm – 8:00 pm at Sewell Automotive Companies. **(ASIST)** Adult Students in Scholastic Transition (ASIST) scholarship application and information is available on your EWI Dallas Website. **Dallas Chapter Relative's Scholarship:** Scholarship application and information is available on your EWI Dallas Website. **Philanthropy:** Membership is asked to collect bras, camisoles and tank tops for donation to the Genesis Women's Shelter. Donations will be delivered in February.

Retention and Recruitment: Director Lexi Wayman, Oakwood Worldwide, reported the following: **Membership Development:** As a part of EWI Corporate's program, the Dallas chapter has been assigned a Membership Advisor, Delynn Walker from EWI Houston. The Dallas membership committee met recently to discuss ideas and initiatives to boost retention and recruitment. Director Wayman is working with Treasurer Jennifer Clark to prepare and distribute paper invoices for membership dues renewal to our valued sustaining members.

Programs: Director Danielle Forney, Trinity Industries, Inc., The EWI® Dallas Chapter Monthly Meeting was held at Ebby Halliday REALTORS conference center.

President Mackenzie Ramey, LH Holdings, Inc./Lyda Hill Foundation, called the business meeting to order at 7:02 pm. All representatives reported on their board reports. The meeting was completed by 7:29 pm.

Guest Speaker Dee Baker Amos with American Heart Association gave us a ***“girlfriend talking to”*** about the dangers of heart disease in women.

Upcoming Meetings:

February 16, 2016 Monthly Meeting, Southwest Allergy and Asthma Center
February 24, 2016 Board Meeting, hosted by Lexi Wayman, Oakwood Worldwide

Communications: Director Denise Labrado, Dallas Regional Chamber, reported for the Communications Committee.

Chapter Newsletter EWIconnect

Colleen Rickenbacher of member firm Global Protocol, Etiquette & Civility Academy coordinated the January issue. Featured articles included: Photos from the December holiday meeting; membership renewal information; Save the Date for the Casino Royale/ Executive Appreciation April 14th event and for the Kendra Scott February 9th event; "Sock it to Me" article thanking the members for their donations of socks; and the "Dallas Great Attractions" article which included Fair Park and The Hall of State; Dallas Arboretum and Botanical Gardens; Freedman's Cemetery and the Dallas Zoo. **Courtesy Notices:** Courtesy Notices were forwarded to the Chapter by Denise Labrado of member firm Dallas Regional Chamber. **Social Media:** The Facebook, Twitter, LinkedIn and Instagram pages for our Dallas Chapter are all active. **Directory:** Email or fax any changes to Sherry Andrus to ensure the Chapter Website is updated (sandrus@dallascvb.com or 214-571-1013).

Fundraising: Director Melanie Linnear of State Fair of Texas reported the next fundraising event is "Kendra Gives Back," an evening of shopping and networking to be held on February 9, 2016 at the Kendra Scott Store at Preston Center. The Chapter receives 20 percent or all sales for that evening. The Casino Royale Executive Appreciation Night Dinner and Scholarship Fundraiser is scheduled for April 14, 2016.

Vice President/President-Elect: Vice President/President-Elect, Lisa Vogel, Sewell Webinar FREE: "WOE to WOW: Excelling Women in Leadership and Helping Them Find Their Why," February 2, 2016, 2:00 CST. The 2016 Leadership Conference and Annual Meeting is scheduled for September 20-25, 2016, in Spokane, WA. There will not be a Spring Conference held this year.

Operations Review Committee: Member Engagement - Kathy Stone continues to encourage Dallas chapter Mentors to connect with their assigned mentees. There are still a few mentors awaiting assignments and as we add members, they will be assigned.

New Business: President Ramey informed Board that it was time to sign the contract for our webmaster. Contract amount is \$2,400. During our budget meeting last summer, we had originally lowered our website expense line from \$2,000 to \$1,000 as we thought we could perform some of the duties in-house; however, we were not able to perform these tasks. Motion was made and carried to increase the budgeted amount for Website expense, Account 430-b, from \$1000 to \$2400.

Director Melanie Linnear of State Fair of Texas gave Board members an update on the Casino Royale Scholarship Fundraiser and Executive Appreciation Night. Sponsorship letters have been mailed out to everyone that supported the event last year. The signing of contracts for room and casino equipment is in process. The event committee will be making follow-up calls for sponsorships and

President Ramey reminded Board of upcoming fundraising event - Kendra Scott on Tuesday, February 9th from 5-8 pm.

January 2016 Survey Results

Survey Name: EWI OF DALLAS JANUARY 2016 BUSINESS MEETING SURVEY

1. Did you attend the January Business Meeting?		
	Number of Response(s)	Response Ratio
Yes	20	95.2%
No	1	4.7%
No Responses	0	0.0%
Total	21	100%

2. Did you find the meeting informative?		
	Number of Response(s)	Response Ratio
Yes	20	95.2%
No	0	0.0%
No Responses	1	4.7%
Total	21	100%

The rep from AHA was so informative!

Very informative presentation from the Heart Assoc.

Kudos to Mackenzie and Danielle!

3. How would you rate the venue - Ebby Halliday REALTORS?		
	Number of Response(s)	Response Ratio
Very Good	4	19.0%
Good	12	57.1%
Fair	3	14.2%
Poor	1	4.7%
No Responses	1	4.7%
Total	21	100%

The quality of the venue was fine, but the seating was very tight. I thought the location was inconvenient.

Harder to interact.

Very impressed with their office, and it was a convenient location!

Distance from work and home plus night driving vision issues prevented me from attending.

The temperature kept changing...not good... taking people from warm to cold..

4. How would you rate the food and beverages served?

	Number of Response(s)	Response Ratio
Very Good	11	52.3%
Good	7	33.3%
Fair	2	9.5%
Poor	0	0.0%
No Responses	1	4.7%
Total	21	100%
4 Comment(s)		

5. Did you review the January Business Meeting Information and Booklet prior to attending the meeting?

	Number of Response(s)	Response Ratio
Yes	16	76.1%
No	5	23.8%
No Responses	0	0.0%

I took a quick peek

Printed it and looked at it briefly; need to review it more thoroughly!

6. Do you agree the speaker, Dee Baker Amos, was knowledgeable about the subject matter as presented?

	Number of Response(s)	Response Ratio
Agree	20	95.2%
Neutral	0	0.0%
Disagree	0	0.0%
No Responses	1	4.7%
Total	21	100%

I think we should spend more time on reports than cut those short to have a speaker at the business meeting

She was really awesome. Learned a lot of things I was not aware.

Very fun and informative!!

Loved the video

I'm sorry I missed her - we are big fans and supporters of the AHA!!!

Dee Baker Amos was great. Valuable information... which it was not a business meeting so she could have had more time... great meeting though

7. Did you share the valuable information received from the American Heart Association with your executive or appropriate team member? Remember Go Red Day - February 5th

	Number of Response(s)	Response Ratio
Yes	17	80.9%
No	4	19.0%
No Responses	0	0.0%
Total	21	100%

8. Did you receive your special offer cards from Rebecca Marabito of member firm Rosewood Crescent Club & Spa?

	Number of Response(s)	Response Ratio
Yes	17	80.9%
No	3	14.2%
No Responses	1	4.7%
Total	21	100%

Unable to attend meeting; however, my executive is already a member and enjoys his membership very much. Every member of the Crescent Club team has always given us exceptional customer service. Love them!!

9. Have you renewed your EWI Membership Dues? If not and have questions please contact Lexi Wayman or Mackenzie Ramey.

	Number of Response(s)	Response Ratio
Yes	13	61.9%
No	7	33.3%
No Responses	1	4.7%
Total	21	100%

They are not due until mid year. Thank you.

Not due

I joined this past fall 2015.

Working on it.

They are not due yet.

Just received corrected invoice - running it by my executive for approval.

In process via check request procedure

Dues are not due yet per renewal date on EWI profile and discussed with Lexi. She was very helpful!

10. Will your firm support our upcoming Casino Royale Event with a sponsorship?

	Number of Response(s)	Response Ratio
Yes	8	38.0%
No	9	42.8%
No Responses	4	19.0%
Total	21	100%
Not sure yet.		
Probably. I have not asked about it yet, but plan on discussing it this week.		
Our company will donate to the auction.		
Probably will have to buy tickets because we are a fundraising firm.		
Might just be auction items.		
Working on it.		
I am unable to attend as well as I will be traveling.		
Possibly - will we be receiving any sponsorship info?		
Don't think our company will be able to due to us being a non-profit.		

2015-2016 BOARD OF DIRECTORS



PRESIDENT
Mackenzie Ramey
 LH Holdings, Inc./Lyda Hill Foundation
mramey@lhholdings.net
 214-922-1075



PROGRAM DIRECTOR
Danielle Forney
 Trinity Industries, Inc.
danielle.forney@trin.net
 214-589-8497



COMMUNICATIONS DIRECTOR
Denise Labrado
 Dallas Regional Chamber
DLabrado@dallaschamber.org
 214-746-6771



VP/PRESIDENT-ELECT
Lisa Vogel
 Sewell Automotive Companies
lvogel@sewell.com
 214-902-2207



FUNDRAISING DIRECTOR
Melanie Linnear
 State Fair of Texas
mlinnear@BigTex.com
 214-421-8711



SERGEANT-AT-ARMS
Nichole Robb
 Dallas Convention & Visitors Bureau
Nrobb@dallascvb.com
 214-571-1014



SECRETARY
Jeannette Davis
 JLL
Jeannette.Davis@am.jll.com
 214-438-6122



**RETENTION & RECRUITMENT
 DIRECTOR**
Lexi Wayman
 Oakwood Worldwide
lwayman@oakwood.com
 310-751-4513



ADVISOR
Lindsay Jones
 Ameriprise Financial
lindsay.h.jones@amprf.com
 469-865-1028



TREASURER
Jennifer Clark
 Dallas Hearing Foundation
jennifer.clark@dallashearingfoundation.org
 972-424-7711



BIC/DP DIRECTOR
Shelley Geddie
 Sewell Automotive Companies
sgeddie@sewell.com
 214-902-2200



ADVISOR
Kathy Shannon Stone
 Hoblitzelle Foundation
kstone@hoblitzelle.org
 214-373-0460

2015-2016 Executive Advisory Board



Nicole G. Small
President and CEO
LH Holdings, Inc.



Dale Petroskey
President and CEO
Dallas Regional Chamber



Paul Harris
President and CEO
Hoblitzelle Foundation



Sherry Adams, PHR
Human Resources Director
EBBY HALLIDAY COMPANIES