

Dallas

# EWI Connect

Chartered 1951

February 2022

Dear EWI Community,

February is one of my favorite months of the year and not just because it is the month of love, but because February acknowledges Black History and Heart Health. Black women more likely to die from heart disease than their counterparts, so I try to educate myself as much as I can. But heart disease is impacting all women. Here are a few startling truths about heart disease and women according to the American Heart Association:

- Heart disease causes 1 in 3 women's deaths each year, killing approximately one woman every minute.
- 90 percent of women have one or more risk factors for developing heart disease.
- Since 1984, more women than men have died each year from heart disease and the gap between men and women's survival continues to widen.
- The symptoms of heart disease can be different in women vs. men and are often misunderstood.
- While 1 in 31 American women dies from breast cancer each year, 1 in 3 dies of heart disease.

At our February meeting, we will hear the story of one of our former EWI sisters who survived a very serious heart condition. Her story along with many others are the reasons why I do my best to take care of my heart.

This is a great meeting to invite a guest. Our hybrid format makes it easier for guests to attend virtually if they cannot make the meeting in person.

I hope you all feel loved this month. Eat right, exercise, and take care of your health.

My very best,

*Dawn Redmond*

Dawn Redmond, President

# 15 HAPPENINGS AROUND DALLAS IN HONOR OF BLACK HISTORY MONTH

February is the annual observance of Black History Month, honoring triumphs and struggles throughout our nation's history. We've rounded up local happenings that focus attention to Black History Month happening right here in Dallas between now and March!

2/4: [Mineral Eats](#) pop up in honor of Black History month | North Dallas

2/4: [South Dallas Cultural Center](#) Shades of Black arts showcase / South Dallas

2/10: Black Love Cinema at [Alamo Drafthouse](#) with the Black Millennials of Dallas / Cedars

2/12: [Remembering Black Dallas](#) African American Heritage Tour by motorcoach / Far North Dallas

2/13: Black History Run ~5k hosted by [Kolbe](#) / South Dallas

2/17 - 3/6: [Bishop Arts Theatre](#) The How To Be Project: Ten Plays for Racial Justice / Bishop Arts

2/19: [Kindred Creatives](#) Black History Month Family Day at Music City Mall / Lewisville

2/19: HHOH Wall of Love donations for Black History Month / Cedars

2/19: [Infinite Arts Movement](#) B.A.C. 2 Black Black Arts Centennial / Frisco

2/20: Dallas Black History, Past & Present Tour by Dallas Bites! Food Tours

2/26: [Cimone Key Creative](#) Black History Month pop up shop / Design District

## MONTH LONG

[The African American Museum](#): 2022 Black History Month Virtual Festival

[Henry B. Tippie National Aviation Education Center](#): exhibit extensions in honor of Black History Month / Oak Cliff

[Grandscape](#): Black History Month Movie Series / The Colony

[The Bush Center](#): The Continual Struggle: The American Freedom Movement and the Seeds of Social Change" by Brian Washington until 3/27 / Park Cities

[Click here to buy tickets!](#)

Purchase  
1 for \$20.92



Purchase  
3 for \$52.30



Purchase  
6 for \$104.60



IF YOU CAN READ THIS

**THANK A TEACHER**



**Show your favorite teacher you appreciate them and buy tickets to win this basket! Almost \$300 worth of teacher supplies!!!**



All proceeds will go to the BCDP fund for the EWI Dallas Chapter

Included in basket: 10 pack correction tape, 3 pack scissors, laminator, Mr. Sketch markers, 12 pack of sharpies, 8 pack sticky notes, Bostich electric stapler, 32 pack sensory fidget toys, laminating pouches, electric pencil sharpener, 2 pack flash drives, dry erase markers, Kleenex, Lysol wipes, 400 sheets multipurpose paper

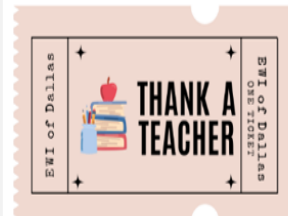


[Click here to buy tickets!](#)

Purchase  
1 for \$20.92



Purchase  
3 for \$52.30



Purchase  
6 for \$104.60

# SCHOLARSHIP OPPORTUNITIES!

PROGRAMS FOR HIGH SCHOOL SENIORS AND ADULTS  
RETURNING TO SCHOOL

APPLICATIONS OPEN JANUARY 3–MARCH 18



DETAILS & APPLICATION ▶



## ADULT STUDENTS IN SCHOLASTIC TRANSITION SCHOLARSHIP

The Adult Students in Scholastic Transition (ASIST) Scholarship Program helps provide financial support to adult students in a variety of transitional situations. EWI believes that the ASIST Program will positively impact the personal life, employment, family, and community of the applicant.

EWI was founded in 1938 by Lucille J. Perkins to change the roles of women in business and the diverse careers held by our members. We are an international organization with 35 Chapters across the United States and Canada. EWI has been awarding scholarships for over 30 years and awards an average of over \$80,000 in scholarships each year through our Chapters and the Corporate Office.

The ASIST Scholarship is a non-discriminatory, educational scholarship program for the benefit of non-traditional students pursuing an associates, bachelor's or master's degree, or a certification program at an accredited educational institution. These include persons who are:

- Past high school age and who are entering a college, university, or trade school and/or the workforce for the first time
- Non-traditional students already enrolled in a college, university, or trade school and/or the workforce for the first time
- Non-traditional students already enrolled in a college, university, or trade school program
- Re-training due to changes in the workplace



## EXECUTIVE WOMEN INTERNATIONAL SCHOLARSHIP PROGRAM

The Executive Women International Scholarship Program is an annual, competition-based program which awards college scholarship money each year to qualifying high school seniors. Judges select winning students based on their scholastic achievement, leadership qualities, good citizenship, and extra-curricular activities. EWI believes that the EWISP Program will positively impact the personal life, employment, family, and community of the applicant.

EWI was founded in 1938 by Lucille J. Perkins to change the roles of women in business and the diverse careers held by our members. We are an international organization with 35 Chapters across the United States and Canada. EWI has been awarding scholarships for over 30 years and awards over \$200,000 in scholarships each year through our Chapters and the Corporate Office.

The EWISP Scholarship is a non-discriminatory, educational scholarship program for the benefit of traditional students pursuing an associates, bachelor's or master's degree, or certification program in a specific career path. These include persons who are:

- High school seniors enrolled in a public, private, charter or parochial school located within the boundaries of a participating EWI Chapter or students who are homeschooled who:
  - Plan to pursue a degree at an accredited post-secondary institution
  - Have a demonstrated financial need
  - Have a minimum 3.0 GPA on a 4.0 scale
  - Have contributed to their community as demonstrated by their involvement in extracurricular activities, employment, civic or volunteer activities

## EXECUTIVE WOMEN INTERNATIONAL SCHOLARSHIP PROGRAM (EWISP) DESCRIPTION & REQUIREMENTS

### **2022 EWISP APPLICATIONS ARE NOW OPEN!!**

**Scholarship applications must be submitted electronically by  
Friday, March 18, 2022, at 5:00pm CDT**

The Executive Women International Scholarship Program (EWISP) has been helping high school seniors/12<sup>th</sup> graders achieve their academic goals for over 35 years. The EWISP program is an annual, competition-based program which awards college scholarship money each year to qualifying high school seniors. The applicants will be judged on several factors with special emphasis on their financial need, leadership qualities, extracurricular activities, scholastic records, oral and written communication skills, creativity, awards and honors, attitude, and career goals. **Only one senior per high school may be nominated by their counselor or school administrator.** Up to \$8,000 will be awarded at the EWI of Dallas Scholarship Awards Dinner in the spring of 2022.

#### **Applicants must meet the following eligibility requirements:**

- Currently a high school senior
- Nominated by his/her school counselor or school administrator
- Enrolled in a public, private, parochial school or homeschooled
- Legally reside in the USA and live within boundaries of Dallas, Collin, or Tarrant counties
- Plan to pursue a degree at an accredited post-secondary institution
- Have a demonstrated financial need
- Have a minimum 3.00 GPA on a 4.0 scale
- Have contributed to their community as demonstrated by their involvement in extracurricular activities, work, religious, civic, or volunteer activities

#### **Please note – students are required to upload the following documents:**

- **FAFSA/TAFSA Student Aid Report**
- **Prior Year Income Tax Return for parents or legal guardian**
- **Current Student Transcripts**
- **ACT/SAT Scores**
- **Two (2) Letters of Recommendation** - Letters should be from a past/present employer, advisor, guidance counselor, teacher, youth group leader, or similar leadership role. No family member recommendations will be considered.
- **Personal Essay** - Please incorporate ALL of the following topics into the content of your essay:
  1. How will your course of study contribute to your future career plans and why have you chosen this path?
  2. Tell us about a time you failed and what you learned from the experience.
  3. Many people have influenced and mentored you throughout your young life. Describe the person who has impacted your life the most and how it has changed you.

#### **\*\*School Counselors and Administrators\*\***

To nominate a high school senior and receive the link to the online application, please email [ewi.dallas.scholarships@gmail.com](mailto:ewi.dallas.scholarships@gmail.com) the following information about your nominee:

1. Student's full name
2. Name of high school they are attending
3. Student's email address

If you have any questions, please contact **EWI of Dallas - Scholarships**

[ewi.dallas.scholarships@gmail.com](mailto:ewi.dallas.scholarships@gmail.com)

[Scholarships & Awards – EWI of Dallas \(ewidallas.com\)](http://ewidallas.com)

## ADULT STUDENTS IN SCHOLASTIC TRANSITION (ASIST) DESCRIPTION & REQUIREMENTS

**2022 ASIST APPLICATIONS ARE NOW OPEN!!**

Scholarship applications must be submitted electronically by  
**Friday, March 18, 2022, at 5:00pm CDT**

**[CLICK HERE TO APPLY FOR THE 2022 ASIST SCHOLARSHIP!](#)**

The EWI Adult Students in Scholastic Transition (ASIST) Scholarship Program helps provide financial support to adult students in a variety of transitional situations. The ASIST Scholarship is a non-discriminatory, educational scholarship program for the benefit of non-traditional men and women pursuing an associate's, bachelor's or master's degree, or a technical/professional certificate. Selection criteria includes, but is not limited to financial need, social, physical, and economic challenges, and individuals with children residing in the home. Up to \$8,000 will be awarded at the EWI of Dallas Scholarship Awards Dinner in the spring of 2022.

### **ASIST applicants must meet the following eligibility requirements:**

- **Not** currently enrolled in high school
- 18 years of age or older by the application deadline
- Legally reside in the USA and **live within boundaries of Dallas, Collin, or Tarrant counties**
- Adult students entering a college, university, trade school and/or the workforce for the first time
- Non-traditional students already enrolled in a college, university, or trade school
- Persons in need of re-training due to changes in the workplace

### **Applicants must be able to:**

- Clearly define career goals and objectives
- Show current and projected educational expenses
- Specify the educational requirements needed to attain the above goals and objectives
- Demonstrate utilization of re-entry programs available through colleges/universities/technology centers, community agencies, service groups or career professionals

### **\*\*Please note – students are required to upload the following documents:**

- **Transcript from school attending (or most recent school attended)**
- **Most recent tax return**
- **Two (2) Letters of Recommendation** - one can be from an employer (past/present), teacher/school administrator, sponsor, and second reference can be from church official, volunteer organization or personal acquaintance. These references should focus on the candidate's goals/objectives and potential for success.
- **Personal Essay** - Please incorporate **BOTH** of the following topics into the content of your essay:
  1. Describe what your life's goals and objectives are and how obtaining additional education or a college degree will further these goals and objectives
  2. Explain what qualifies you for this scholarship
- **If applicable, a copy of financial package letter from the school you are attending**
- **If applicable, copies of applications for:** Other Scholarships - Government Grants - Government Loans - Government Aid (food stamps, rent/housing subsidy, etc.) - Unemployment benefits - Other financial assistance

**[CLICK HERE TO APPLY FOR THE 2022 ASIST SCHOLARSHIP!](#)**



## From Work to Working Out

•••••

Becoming more active might be at the top of your resolutions, but it's not always easy to incorporate more activity into your busy schedule. Here's a few ways to make daily exercise a more seamless part of your day:

### Tip #1: Do It Early

Staying prepped will help you feel more ready for a morning sweat session. Pack your gym bag and layout your comfiest gear the night before, drink water before bed, and mentally plan for that rockin' playlist for when you sweat it out. You might find it easier to knock out the hardest part of your day, the earliest.

### Tip #2: Don't Make It Difficult

It's not always about the heaviest or the swiftest movements in your workout, it might just mean slowly incorporating more movement in your day as part of your normal tasks. Take the stairs over the elevator, go for an extra lap when refilling your water bottle, or stretch at your desk (desk yoga is a thing!) to keep your body moving.

### Tip #3: OOO

Plan for a daily walk over a mid-morning, lunch, or mid-afternoon break to clear your head and help the blood flow after sitting or standing in one place for too long. If needed, block some time off your calendar so you aren't interrupted with meeting invites or email sprints while you reset over rhythmic treading.

### Tip #4: Buddy System

Everything's better with a friend. Ask your work bestie to help keep you accountable in your quest for more movement throughout the day. Psst, this may be the perfect opportunity to sync up your fitness watches to make it a little friendly competition too.

[Click here for suggestions on  
HOW TO START WORKING OUT AT HOME  
FOR BEGINNERS](#)



## [LCAM 2022 NEWS BLAST – January 2022](#)

**Leadership Caucus – Training for Incoming Leaders and Board Members:** Wednesday, September 14, 2022 (3:00 PM to 8:00 PM)

**Conference Dates:** Thursday, September 15 – Saturday, September 17, 2022

We will have more details coming soon, but you will want to plan to arrive Wednesday evening in time for our Opening Reception!

### **Conference Registration opens April 1, 2021**

- \$700 Early Bird registration (April 1, 2022 – June 30, 2022)
- \$800 Regular registration (July 1, 2022 – September 15, 2022)
- \$150 Leadership Caucus – One set price for all attendees!

**Conference Venue:** Omni Corpus Christi Hotel, Corpus Christi, TX

### **Workshop Speakers Needed! Deadline to turn in application: January 21, 2022**

Are you interested in speaking at LCAM 2022? Please complete the following application and return it to Corporate Office to [cortney@ewiconnect.com](mailto:cortney@ewiconnect.com)

[https://ewiconnect.com/resource/resmgr/lcam/2022/lcam\\_workshop\\_speaker\\_appli.docx](https://ewiconnect.com/resource/resmgr/lcam/2022/lcam_workshop_speaker_appli.docx)

### **Vendors**

What LCAM would be complete without vendors for our attendees to have some fun shopping for some unique items to remind them of where they are?

If you have questions, are interested in being a vendor or know someone who might be; contact Vicky Mitchell ([vmitchell325@att.net](mailto:vmitchell325@att.net)) or Cassy Fleming ([cfleming@americanbank.com](mailto:cfleming@americanbank.com)) or click on the following link and complete the Vendor Registration form.

[http://resource/resmgr/lcam/2022/lcam\\_2022\\_vendor\\_registra.docx](http://resource/resmgr/lcam/2022/lcam_2022_vendor_registra.docx)





## Sponsorships & Program Guide Advertisements

LCAM 2022 wouldn't be possible without the support of our Chapters, Member Firms, Individual Representatives, and Corporate Board members.

This year, sponsors will be promoted on our website, in our conference communications and during the conference in our programming. Additionally, we have enhanced our Presenting, Envision, Elevate, and AOL Sponsors to include LCAM Registration in the follow manner:

- \$10,000 Presenting Sponsor – 4 Complimentary LCAM Registrations
- \$5,000 Envision Sponsor – 2 Complimentary LCAM Registrations
- \$2,500 Elevate Sponsor – 1 Complimentary LCAM Registration
- \$2,500 Academy of Leadership (AOL) Sponsor - 1 Complimentary LCAM Registration

Each Sponsor will also be listed in our LCAM 2022 Program Guide. If your firm or Chapter would like to sponsor LCAM 2022, you can find all the sponsor forms on the EWI website or you can contact: **Donna Patterson** at [dpatterson1026@sbcglobal.net](mailto:dpatterson1026@sbcglobal.net).

**Deadline to sponsor and be included in print material is August 1, 2022.**

**Program Guide Advertisements** may also be purchased for the 2022 LCAM Program Guide. If you would like to promote your business to LCAM 2022 attendees, we invite you to purchase a program advertisement.

[http://resource/resmgr/lcam/2022/2022\\_lcam\\_adspecs-flyer.pdf](http://resource/resmgr/lcam/2022/2022_lcam_adspecs-flyer.pdf)

You can the Ad Specs Flyer on the ewiconnect.com event page or you can contact: **Donna Patterson** at [dpatterson1026@sbcglobal.net](mailto:dpatterson1026@sbcglobal.net).

All ads must be emailed to [cortney@ewiconnect.com](mailto:cortney@ewiconnect.com) in a print-ready file (.jpeg or .pdf) and payment must accompany your ad.

**Deadline to secure your advertisement is August 1, 2022.**

# WE NEED YOU!

## WE NEED DONATIONS FOR THE SILENT AUCTION AND DOOR PRIZES! HELP US CREATE AN EPIC LCAM!



We can't wait to celebrate LCAM 2022 with you in Corpus Christi, Texas!

Please contact Jennifer Clark, EWI Dallas Chapter, to donate items. Please email

[jennifer.clark@dallashearingfoundation.org](mailto:jennifer.clark@dallashearingfoundation.org)



## APRIL PROFESSIONAL DEVELOPMENT WEBINAR

Funding Your Child's Post-High School Education

Presenter: Kathy Knecht

College Prep Consultant  
Keystone Capital Management Group

Tuesday, April 14, 2022  
1:00 PM CT



[Register Here](#)

# EVENTS & WEBINARS

## MAY PROFESSIONAL DEVELOPMENT WEBINAR

5 Methods for Thinking Like a Genius

Presenter: Roseann Freitas

College Prep Consultant  
Keystone Capital Management Group

Tuesday, May 10, 2022  
1:00 PM CT



[Register Here](#)



# Happy Anniversary!



## BGSF

### Upcoming Birthday's

March 1st

[Lindsay Jones](#),

Ameriprise Financial Services

March 3rd

[Jessica Vitela](#),

State Fair of Texas

March 26th

[Kathy Broll](#),

Stream Realty Partners, LP

March 21st

[Veronica Sanders](#),

Design with Veronica Sanders, LLC

March 30th

[Janie Sandoval](#),

Chapter Life Member  
The Dallas Breakfast Group



**FEBRUARY 20TH**

[Kathy Dodson](#),

Sustaining Member  
EY

**February 25th**

[Carolyn Trechter](#),

Sustaining Member  
First Republic Bank Dallas

**FEBRUARY 28TH**

[Lisa Carter](#),

Four Seasons Resort and Club

**January 26, Reports & Board of Directors Recap**

Location: Zoom courtesy of Dawn Redmond

**Secretary’s Report:**

Minutes of the December 16, 2021, board meeting were approved. The Secretary, Denise Labrado reported six Courtesy Notices had been emailed since the last board meeting.

The following two firms are celebrating anniversaries in January: BGSF, 1 year; Special Delivery Service, Inc., 17 years; and The Clubs of Prestonwood, 1 year (renewed in 2021).

**Treasurer’s Report:**

Chapter Treasurer, Danielle Forney, reported that the chapter has a total of \$86,629.27 in our General and Market Index accounts, and a total of \$29,960.20 in the B/C/DP account after obligations.

**Sergeant-At-Arms:**

Officer Millie Marsac reported a total of 15 individuals attended the January 18, 2022, Chapter Meeting: fourteen representatives and one sustaining/transitional. Sixty-eight percent of our member firms were represented.

<b>Chapter Membership:</b>	
Total Member Firms	21
Total Representatives	19
Total Executives	21
Total Sustaining	11
Total Transitional	2
Total Chapter or Corporate Life	3
<b>Meeting Attendance:</b>	
Firms Represented by Reps	14
Guests Present	0
Percentage of Firms Present	68%
Representatives Present	14
Executives Present	0
Sustaining/Transitional Members Present	1
<b>Total Attendance:</b>	<b>15</b>

**B/C/DP:**

On behalf of the B/C/DP committee, Lisa Tignor reported the following:

**Executive Women International Scholarship Program (EWISP)**

Applications for EWISP and ASIST will be accepted from January 3, 2022 – March 18, 2022.

**Adult Students in Scholastic Transition (ASIST)**

Amelie Brewer will chair the ASIST Scholarship program. Deborah Tough will co-chair and will provide support to both the EWISP and ASIST programs.

**Dallas Chapter Only Scholarship**

No Report

**Needs Based Scholarship**

No Report.

**Philanthropy**

The 2022 “Best Teacher Ever” Fundraiser, which will include a basket comprised of items that teachers would love to receive, will be launching shortly. We received the basket and items at the January Chapter meeting. Chapter members will be encouraged to buy and sell tickets for the drawing for the basket. The tickets will be sold \$20 for one and \$50 for three. The drawing will likely be launched by the end of January.

**Literacy Initiative** No report. **Professional Development Award (LCAM)** No report.

**Retention and Recruitment:**

Director Jeannette Davis reported for the Retention and Recruitment Committee.

**New Firms/Members:** None. **Replacement Executives:** None. **Replacement Representatives:** **Resignation Firms:** None. **Resignation Executives:** **Representatives:** **Firms with Pending Executives:** None. **Firms with Pending Representatives:** Interstate Batteries, State Fair of Texas, The Clubs of Prestonwood. **New Chapter Life Members:** None. **New Sustaining Members:** None.

**Membership Development:**

Several members of Retention & Recruitment Committee met virtually on Thursday, December 30, 2021 to strategize on steps to retain and grow our membership. It is the desire of the Committee to continue to provide the virtual option to membership for all of our Chapter monthly meetings.

**Programs:**

The EWI® of Dallas January Chapter Meeting was held on January 18, 2022, in person and via Zoom at Ellen's, hosted by EWI Chapter. Members and guests were welcomed by Vice President Jennifer Clark, Dallas Hearing Foundation. Secretary, Denise Labrado, Arlington Convention & Visitors Bureau, gave the invocation. Vice President Clark called the business meeting to order at 6:26 pm. Sergeant-At-Arms, Mille Marsac, Bank of America, confirmed we had a quorum. Retention & Recruitment Director, Jeannette Davis, JLL, read the parliamentary procedures. Each director presented their report to the membership. The Business/Career/Development Program (B/C/DP) Director position is open therefore Advisor, Lisa Tignor, McKinsey & Company gave the B/C/DP report. During the special reports, Vice President Clark, called for motions on several items that were all approved unanimously.

Before we adjourned the meeting, Vice President Clark announced the January Board meeting will be held via Zoom on January 26, 2022, at 5:00 pm. hosted by President Dawn Redmond, Ebby Halliday Realtors. More details to come on our sweet February 15 Chapter meeting.

Vice President Clark adjourned the meeting at 7:00 pm.

**Upcoming Meetings:**

Tuesday, February 15, 2022 - 6:00 pm, Chapter Meeting  
Meeting details to be confirmed

Wednesday, February 23, 2022 - 5:00 pm, Chapter Board Meeting  
Meeting details to be confirmed

**Communications:**

Communications Director, Katie Cowan reported on Chapter communications.

**Chapter Newsletter EWICConnect**

The January issue of the *EWIConnect* Newsletter is a special edition which focuses on the 70<sup>th</sup> Anniversary of EWI of Dallas. It retraces the history of our Chapter and highlights important people and events that have taken place over the past 70 years.

**Courtesy Notices**

Six courtesy notices were sent including the Newsletter. **Social Media:** All social media sites are live and active.

**Directory:** Directory updates are ongoing. **Website:** Website updates are ongoing.

**Fundraising** President-Elect Jennifer Clark, Dallas Hearing Foundation, reported the follow:

The teacher basket fundraiser was moved to January while waiting for response from Melanie Linnear regarding the donations from her vendors. The chapter will be having a raffle to win a basket for a chosen teacher. We will create a basket of items that a teacher would need and enjoy. The chapter will sell raffle tickets to win the basket for the teacher of their choice.

Melanie Linnear, State Fair of Texas, announced at the October meeting that she would get donations from her donors to be able to provide 3 baskets for the raffle.

**Vice President/President-Elect:** President-Elect Jennifer Clark, Dallas Hearing Foundation, reported the follow:

**Corporate Webinars:** A series of monthly webinars were produced by EWI® Corporate to expand the benefits to the member firms and increase personal and professional development for its members. Also featured are webinars aimed to improve chapter development and communicate organizational changes to members. These webinars are free and available to all representatives and employees of member firms.

**Dates and Subjects of Professional Development:**

**FREE Webinar:**

February Webinar: Details TBD

**Dates for 2021 Conferences:**

LCAM – Corpus Christi, TX, September 2022

**Operations Review Committee:**

Nominating Committee – Lisa Tignor – No Report.

Budget –Danielle Forney - No Report. Bylaws and Rules – Jeannette Davis - No Report. Ebby Halliday Executive Excellence Award – Lisa Tignor - No Report. Historian – Janie Sandoval - No Report. Official Greeter/Courtesy – Deborah Tough - No Report. Parliamentarian – Jeannette Davis -No Report. Ad-Hoc Long-Range Planning (Strategic Plan) – Jennifer Clark – No Report. Member Engagement – Jennifer Clark - No Report. Publicity – Melanie Linnear - No Report. Sustaining – Kathy Stone - No Report. Treasurer –Danielle Forney - No Report.



CONNECTIONS | CAREERS | COMMUNITY

2020-2021

**EXECUTIVE ADVISORY BOARD**



**Sherry Adams**  
Vice President of  
Human Resources  
Ebby Halliday Companies



**Lindsay Jones**  
Financial Advisor  
Ameriprise Financial  
Services, Inc.



**Melanie Linnear**  
Vice President of  
Food Service  
State Fair of Texas



**Kim Loving**  
Operations Manager  
McKinsey & Company

EWI Corporate Office  
1288 Summit Ave. Ste. 107  
PMB 124  
Oconomowoc, WI 53066  
262.269.5625  
[ewi@ewiconnect.com](mailto:ewi@ewiconnect.com)  
[ewiconnect.com](http://ewiconnect.com)  
[my.ewiconnect.com](http://my.ewiconnect.com)

## Mission

Executive Women International (EWI) brings together key individuals from diverse businesses for the purpose of promoting member firms, enhancing personal and professional development, and encouraging community involvement.

## Vision

To enhance professional growth and development within a diverse group of women while empowering them to make a difference as they inspire others.

## Values

Integrity | Excellence | Respect | Collaboration



## LEADERSHIP CONFERENCE & ANNUAL MEETING

September 15-17, 2022  
Corpus Christi, TX



EWI's Leadership Conference and Annual Meeting (LCAM) is an annual professional development conference where members from our Chapters gather to connect, network and grow professionally through keynote speakers, workshops, seminars, group discussions, and more. During LCAM, delegates also conduct the business of the organization during our annual meeting. We also hold social gatherings, Reading Rally events, recognize our members for their accomplishments, and learn new ideas.



# 2021-2022 EWI of Dallas Board of Directors

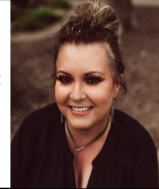
*President*



Dawn Redmond  
Ebby Halliday Realtors  
214-689-8424

[dawnredmond@ebby.com](mailto:dawnredmond@ebby.com)

*Vice President/President-Elect  
& Fundraising Director*



Jennifer Clark  
Dallas Hearing Foundation  
214-796-2006

[jennifer.clark@dallashearingfoundation.org](mailto:jennifer.clark@dallashearingfoundation.org)

*Secretary*



Denise Labrado  
Arlington Convention & Visitors Bureau  
469-774-6495

[Denise@arlington.org](mailto:Denise@arlington.org)

*Treasurer*



Danielle Fomey  
NeubergerBerman  
972-951-2405

[danielle.forney@nb.com](mailto:danielle.forney@nb.com)

*Sergeant-At-Arms*



Millie Marsac  
Bank of America  
469-951-6149

[millie.marsac@bofa.com](mailto:millie.marsac@bofa.com)

*Retention & Recruitment  
Director*



Jeannette Davis  
JLL  
214-707-7883

[jeannette.davis@am.jll.com](mailto:jeannette.davis@am.jll.com)

*Communications Director*



Katie Cowan  
Vault Aviation  
214-918-9130

[katie@vaultjet.com](mailto:katie@vaultjet.com)

*Program Director*



KeChan Patterson  
Downtown Dallas, Inc.  
214-744-1270

[patterson@downtowndallas.com](mailto:patterson@downtowndallas.com)

*Advisor*



Lisa Tignor  
McKinsey & Company  
214-532-0630

[lisa\\_tignor@mckinsey.com](mailto:lisa_tignor@mckinsey.com)

# Member Firms

